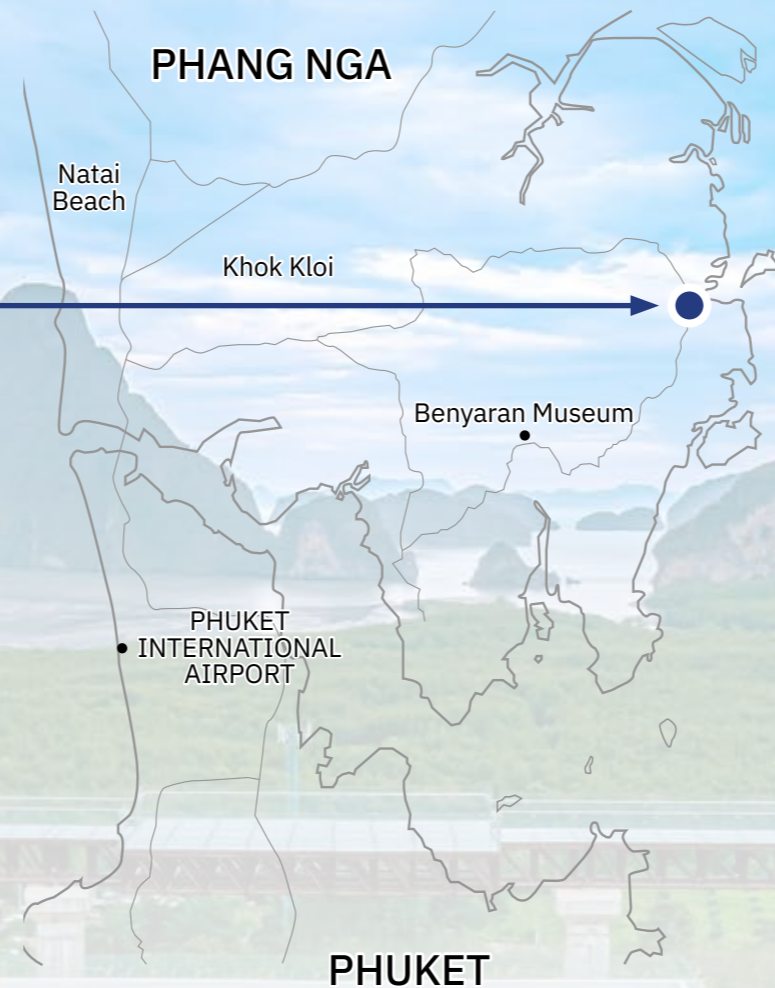


Beyond Skywalk Nangshi | 
Phang Nga , Thailand





POINT OF INTEREST	km	min
Ko Tapu (James Bond Island)	7.3	4.5
Koh Yao Noi	22	13.7
Koh Panyee	44.8	44
Khaolak Town	76.3	66
Phuket Town	67.4	76



Phuket International Airport



43.6 km



45 min



Car/Van

LOCATION

Beyond Skywalk Nangshi your ultimate destination for an unforgettable experience. Choose from sea-view tent, forest tent, sea-view pavilion, or Speciality Explorer Villa all offering stunning view of the sunrise and Samet Nangshe Mountain.

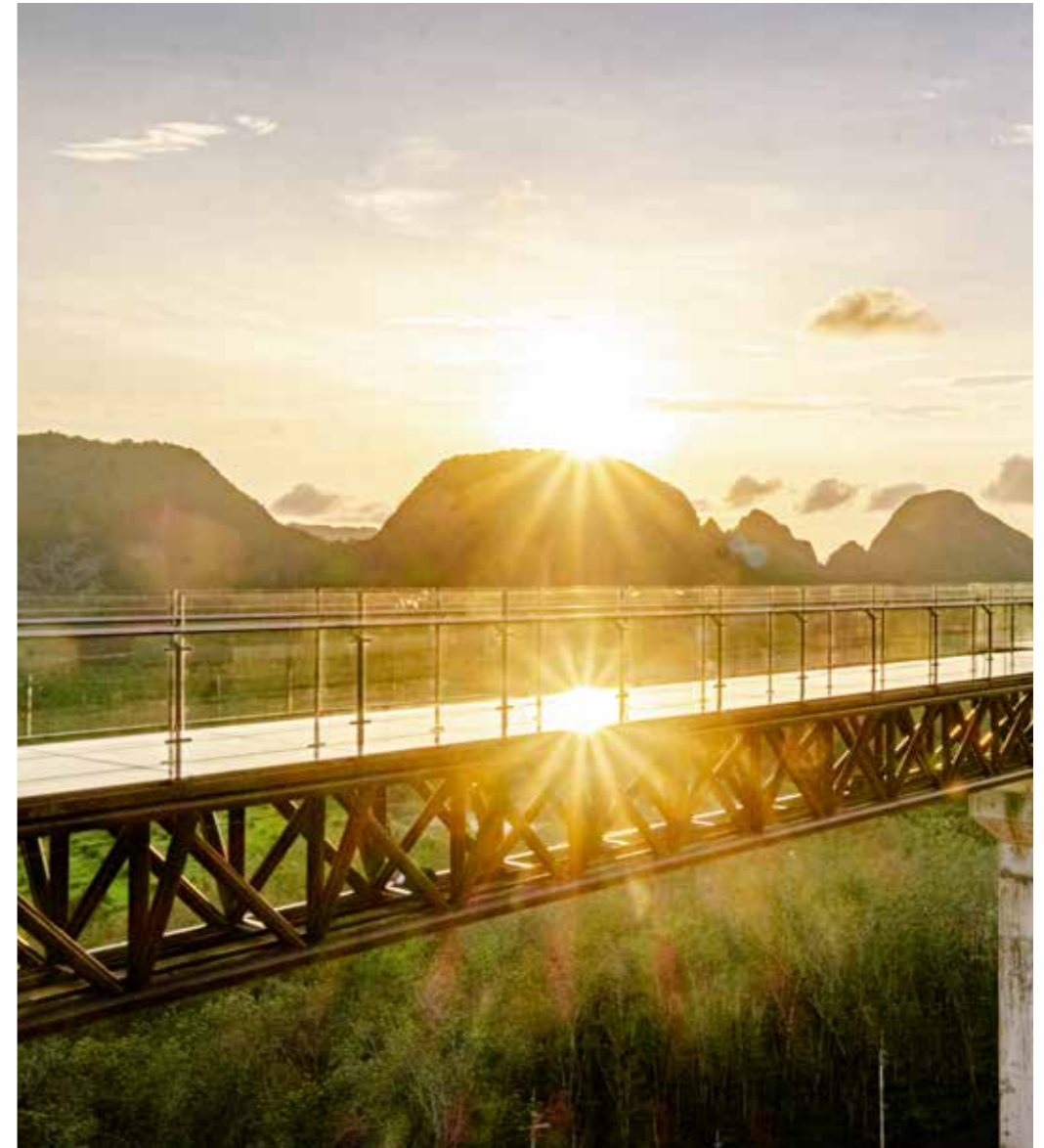
HOTEL DETAIL

Hotel Type	Attraction & Resort
Number of room(s)	58
Standard Check-in	15:00 hr
Standard Check-out	12:00 hr
Family Fun	No
MICE	No



Beyond Skywalk Nangshi

Phang Nga, Thailand



UNIQUE SELLING POINT

Enjoy panoramic view: Beyond Skywalk Nangshi is our newest resort location at one of Thailand's most popular natural landmark with 180-degree panoramic views of Phang-Nga bay

Unforgettable sight: Beyond Skywalk Nangshi is a new gem in Samed Nangshi, with its glass and steel skywalk at 80 meters above sea level promising dramatic and unforgettable scenery

Community spirit: The resort and landmark work closely with the local community and hope to showcase the way of life and the natural beauty



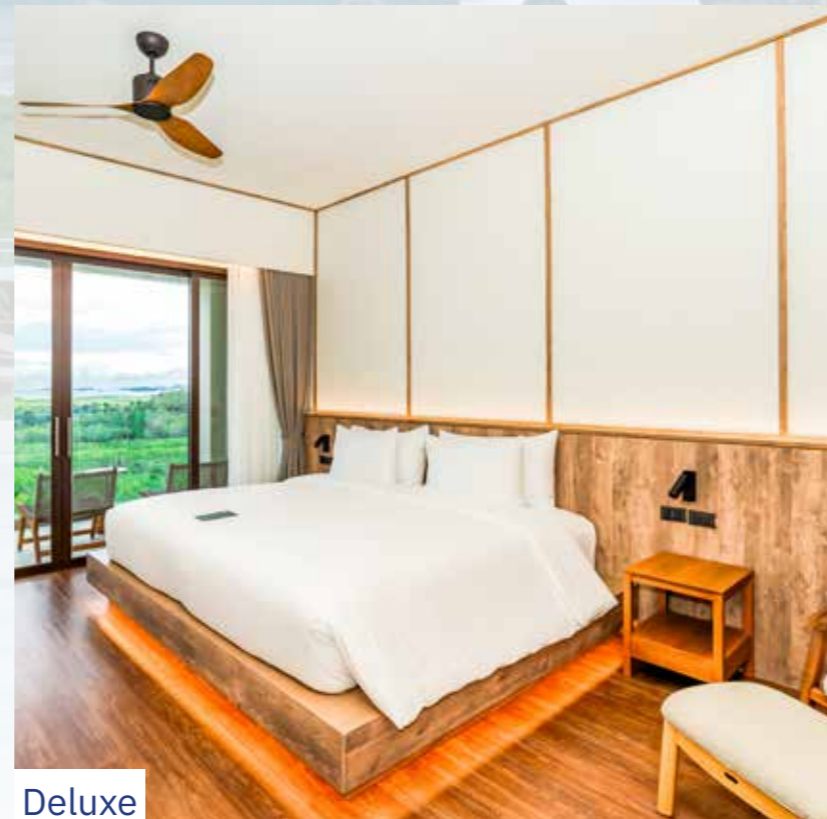
Forest Tent



Seaview Tent



Seaview Pavilion



Deluxe

BEYOND SKYWALK NANGSHI ROOM

Accommodation: 58
Room Type: 8

Room Type	Unit	Sqm (Include Balcony)	Person A+C
Forest Tent	15	73	3
Pavilion	6	30-31	3
Seaview Tent	15	73	3
Seaview Pavilion	16	30-31	3
Deluxe	1	55-60	3
Deluxe Family	1	66	6
Family Seaview	2	66-73	2+2
Two Bedroom Pool Villa	2	240	6

Extra Bed: No

Child Policy:

- Child under 2 years of age, free of charge
- Forest Tent & Seaview Tent guests over 12+ years old are allowed
- Child aged 12+ years counted as an adult



UNPARALLELED EXPERIENCES AWAIT

Beyond Skywalk Nangshi isn't just a resort, it's an experience. Take a dip in the infinity pool perched on the fourth floor, offering panoramic views for an unforgettable swim. Savor delicious meals at the Horizon & Lab Tawan restaurants, indulge in sweet treats and refreshing beverages at Kanda Coffee & Bakery, or explore the surrounding wonders with our on-site tour service.



FACILITY

FACILITY	Opening Time			Seat
FOOD & BEVERAGE				
Horizon Restaurant	06:30	-	22:00	60-80
Kanda Coffee and Bakery	06:30	-	19:30	20-40
Pool Bar	10:00	-	18:00	24
Rub Tawan Restaurant	06:30	-	19:00	114
HEALTH & ACTIVITY				
Beyond Skywalk	06:00	-	19:00	-
Swimming Pool	07:00	-	19:00	-



SUSTAINABILITY STATEMENT

Beyond Skywalk Nangshi, prioritizes sustainability through a comprehensive initiative aimed at reducing environmental impact and promoting eco-friendly practices. Their vision encompasses creating a harmonious balance between luxury and environmental responsibility by implementing energy-efficient technologies, reducing waste, and conserving water. Committed to fostering community engagement and supporting local economies. Promoting Responsible tourism, by not only achieving various International certification but integrating the same in day to day operation.

PLEASE HELP US SAVE PRECIOUS WATER AND ENERGY SUPPLIES

WE WOULD APPRECIATE YOUR HELP
Laundering bed linen and towels uses considerable amounts of water and electricity, and reducing in the volume of fabrics sent to the laundry can significantly lessen the use of these resources.
If you wish to continue using the same towels, please hang them on the rack like you do at home.
Should you prefer to have fresh towels, simply place the used ones on the bathroom floor or in the towel basket.
If you wish to change your bed linen, please let us know by placing this card on the bed.

THANK YOU FOR JOINING US IN CONSERVING THE ENVIRONMENT

请配合我们节省宝贵的水和电资源。
床单和毛巾的换洗亦需要消耗大量的水和电资源。降低更换频率可以减少对资源的消耗。
如果您继续使用毛巾, 请将毛巾晾在衣架上。
如果您希望更换毛巾, 请将毛巾放到脏衣篮里或卫生间地上。
需要换床单, 请把这张牌放在床上。
感谢您参与我们节约资源的行动。

Пожалуйста, помогите нам сохранить драгоценную воду и источник энергии. Стирка постельного белья и полотенец затрачивает воду и электричество, а также истощает природные источники.
Если вы желаете продолжить использовать Ваше полотенце, пожалуйста, разместите их на крючке в ванной комнате, так, как вы делаете это дома.
Если вы желаете, чтобы Ваш полотно был заменен - оставьте их на полу в ванной комнате или в корзине для полотенец.
Если вы хотите сменить постельное белье, сообщите нам об этом, положив эту карточку на свою кровать.
Спасибо, что вы присоединились к нашей сохранению окружающей среды.

Scan me!
please scan QR code to get more information about our sustainability policy

น้ำและพลังงานมีค่า โปรดช่วยกันประหยัด

เราขอขอบคุณสำหรับความห่วงใยของท่าน การซักผ้าปูที่นอน และผ้าเช็ดตัว นั้นเป็นการใช้ทรัพยากรน้ำ และไฟฟ้าเป็นจำนวนมาก ซึ่งคุณสามารถช่วยลดการใช้ทรัพยากรเหล่านี้ได้ หากท่านต้องการใช้ผ้าเช็ดตัวเดิมๆ โปรดแขวนผ้าเช็ดตัวไว้ในราว หรือหากท่านต้องการผ้าเช็ดตัวใหม่ โปรดวางผ้าเช็ดตัวที่ใช้นี้ลงบนพื้นในห้องน้ำ หรือในห้องครัว หากท่านต้องการเปลี่ยนผ้าปูที่นอน โปรดวางการ์ดนี้ไว้บนเตียงนอนของคุณ ขอขอบคุณที่เป็นอย่างสูงในการร่วมกันอนุรักษ์สิ่งแวดล้อม

WIR WÜRDEN UNS ÜBER IHRE HILFE FREUEN
Das Reinigen von Bettwäsche und Handtüchern verbraucht erhebliche Mengen Wasser und Strom. Die Ressourcen können jedoch deutlich reduziert werden, wenn weniger Wäsche zur Reinigung gegeben wird.
Sollten Sie weiterhin die gleichen Handtücher verwenden wollen, hängen Sie diese bitte wie zu Hause an den Handtücherhalter.
Falls Sie Ihr Bett neu bezogen haben möchten, bitte legen Sie diese Karte auf Ihr Bett.

VIELEN DANK, DASS SIE SICH UNS BEIM UMWELTSCHUTZ ANSCHLIESSEN

NOUS VOUS REMERCIONS POUR VOTRE CONTRIBUTION
Les lessives pour le linge de maison, parures de lit et serviettes, consomment de grandes quantités d'eau et d'électricité. Réduire le volume de ces lessives réduit de façon significative leur consommation en eau et électricité.
Si vous souhaitez utiliser les mêmes serviettes, merci de les suspendre comme vous le feriez à la maison.
Si vous souhaitez changer votre linge de lit, veuillez nous le faire savoir en plaçant cette carte sur votre lit.

MERCI DE VOUS JOINDRE À NOS EFFORTS POUR LA PROTECTION DE L'ENVIRONNEMENT.

Scan me!
please scan QR code to get more information about our sustainability policy



Pamookkoo Resort

Tel (+66) 7664 3300
Fax (+66) 7664 3333
E-Mail rsvn-pmkr@katagroup.com
70/1 Kata Rd, Tambon Karon
Address Muang Phuket, 83100

pamookkoo.katagroup.com [pamookkooresortphuket](https://www.instagram.com/pamookkooresortphuket) [pamookkooresortphuket](https://www.facebook.com/pamookkooresortphuket)

Phuket Orchid Resort & Spa

Tel (+66) 7635 8333
Fax (+66) 7635 8399
E-Mail rsvn-pors@katagroup.com
34, Luangphochuan Rd, Karon Beach,
Address Tambon Karon, Muang Phuket 83100

orchid.katagroup.com [phuketorchidresort](https://www.instagram.com/phuketorchidresort) [phuketorchidresort](https://www.facebook.com/phuketorchidresort)

Beyond Kata

Tel (+66) 7636 0333
Fax (+66) 7636 0399
E-Mail info-brkt@katagroup.com
1 Pakbang Rd, Kata Beach
Address Tambon Karon, Muang Phuket 83100

kata.beyondresort.com [beyondkata](https://www.instagram.com/beyondkata) [beyondkata](https://www.facebook.com/beyondkata)

Beyond Karon

Tel (+66) 7633 0006
Fax (+66) 7633 0529
E-Mail rsvn-brkr@katagroup.com
51 Karon Rd, Karon Beach
Address Tambon Karon, Muang Phuket 83100

karon.beyondresort.com [beyondkaron](https://www.instagram.com/beyondkaron) [beyondkaron](https://www.facebook.com/beyondkaron)

Beyond Krabi

Tel (+66) 7562 8333
Fax (+66) 7560 0081
E-Mail rsvn-brkb@katagroup.com
98 Moo 3, Klong Muang Beach
Tambon Klong, Muang, Nongtalay
Address Krabi 81180

krabi.beyondresort.com [beyondkrabi_resort](https://www.instagram.com/beyondkrabi_resort) [beyondkrabi](https://www.facebook.com/beyondkrabi)

Beyond Khaolak

Tel (+66) 7659 2333
Fax (+66) 7659 2399
E-Mail rsvn-brkl@katagroup.com
9/69 Moo 1, Pak Weep Beach, Khuk Khak,
Address Takua Pa, Phang Nga 82220

khaolak.beyondresort.com [beyondkhaolak](https://www.instagram.com/beyondkhaolak) [beyondkhaolak](https://www.facebook.com/beyondkhaolak)

Beyond Patong

Tel (+66) 7656 2333
Fax (+66) 7656 2333
E-Mail rsvn-bhpt@katagroup.com
8 Sawatdirak Rd, Tambol Patong
Address Kathu Phuket 83150

patong.beyondresort.com [beyondpatong](https://www.instagram.com/beyondpatong) [beyondpatong](https://www.facebook.com/beyondpatong)

Beyond Samui

Tel (+66) 7742 8888
Fax (+66) 7742 8899
E-Mail rsvn-kdbr@katagroup.com
20 Moo 2, Chaweng Chongmon Road, Koh
Address Samui, 84320 Surat Thani Thailand

samui.beyondresort.com [beyondsamui](https://www.instagram.com/beyondsamui) [beyondsamui](https://www.facebook.com/beyondsamui)

Beyond Skywalk Nangshi

Tel (+66) 7642 9965
E-Mail info-bsky@katagroup.com
Villa Samet Nangshi Co., Ltd.
9/9 Moo2, Tambon Khlong Khian, TakuaThung,
Address Phang nga 82130
9/1 Moo2, Tambon Khlong Khian, TakuaThung,
Phang nga 82130

skywalk-nangshi.beyondresort.com [beyondskywalknangshi](https://www.instagram.com/beyondskywalknangshi) [beyondskywalknangshi](https://www.facebook.com/beyondskywalknangshi)





BEYOND RESORTS AND KATA GROUP

Beyond Resorts and Kata Group has stood out in the Thai hospitality industry for over 40 years. We are one of the longest serving local Thai hoteliers.

The expanding portfolio currently includes eight Beyond Resorts and Kata Group across premier leisure destinations in the south of Thailand and our resorts can be found in Phuket, Phang-nga, Krabi and Koh Samui in Surat Thani.

We look forward to creating more memories with you and thank you for choosing and trusting Beyond Resorts and Kata Group.



Beyond Resorts and Kata Group

